

## Vertical Lifelines

Used to provide temporary fall protection on ladders or when climbing vertical structures. Polysteel green with snap hook on the end.



ITEM#	Description
FP-SVLR78LS	Sure-Grab automatic/ manual rope grab fall arrester, with 1.75" x 1/2" web lanyard, 5/8" locking snap hook
FP-10030433	<b>CSA rope grab kit #1</b> Includes FP-SVLR78LS and 60' vertical lifeline
FP-10030600	<b>CSA rope grab kit #2</b> Includes: FP-SVLR78LS, with 1.75" x 2' shock absorber, and 5/8" x 60' nylon lifeline with 5/8" locking snap hook



## MSA Roofer's Kit

- Pro Vest-Style Harness is a lightweight, durable, and abrasion-resistant harness.
- Lifeline with locking carabiner.
- Light weight rope grab allows workers hands-free operation while descending or ascending
- Roof anchors constructed from heavy-gauge steel with a galvanized finish, and each come with eight galvanized flat head wood screws. Roof anchors and wood screws are disposable.
- Tote bag is a durable carryall constructed of black nylon.



ITEM#	Description
FP-10055731	Roofer's Kit

## Personnel Winches

Strong and durable, it can handle a variety of tasks including material handling, confined space entry/ egress and rescue work. Swivel snap equipped. 50' (15 m) length.



ITEM#	Description
FP-FP2/715GR	3/16" (5 mm) Galvanized cable, 21 lbs (9.5kgs)
FP-FP2/715SR	3/16" (5 mm) Stainless steel cable, 18.5 lbs (8.5 kgs)

## Suretyman™ Rescue Utility System

Primarily used for raising and lowering people or equipment in rescue and industrial work access and is ideal for confined space applications.

### Features:

- Rapid deployment.
- Virtually maintenance free.
- Rated for two person load.
- Pulleys equipped with a built-in anti-reversing lock.
- Only 10 lbs of force required to hold a 220 lbs (90 kg) load.
- Ascender attached to both the operating rope and the user via a securing rope. If the operating rope accidentally releases, the ascender automatically stops the descent.
- Compact and light weight with a standard system weight of 17 lbs (7.7 kg).
- Multi-purpose ascent or descent.
- Rated capacity of 600 lbs (272 kg) for personnel and materials.
- Standard rope length of 200' (66 m) with a maximum rope length of 800' (267 m).



ITEM#	Description
FP-SRS15200	Suretyman Rescue Utility System (200' length)

## Lynx™ Tripod Confined Space Entry Kits

### Contents include:

- Training video, tripod carrying strap.
- Split mount pulley.
- Lynx Rescuer mounting bracket for tripod.
- 16 m Lynx Rescuer; allows for non-entry rescue of a confined space entrant.
- Lynx 8' tripod.



ITEM#	Tripod Confined Space Entry Kits
FP-10048472	Kit #1, includes: carrying bags for tripod and Lynx Rescuer, CSA approved
FP-10048473	Kit #3, includes: carrying bags for tripod, Lynx Rescuer, and Lynx Hoist, CSA approved (shown)

# Have a question?

Call our Customer Service Department  
**1-877-DIAL-ISS**



### Rescue Kit

Ready-to-use combination of equipment for rescue, entry/egress. Simplifies your equipment selection.

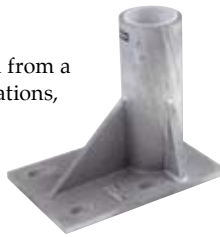


ITEM#	Rescue Kit
FP-FP66/415SR	Contains: three-way self-retracting lifeline with 15 m (50') stainless steel cable, 7' tripod, storage bag, and mounting bracket

### Bantamlift™ Davit System

Installation of the base requires approval from a professional engineer. For custom applications, please contact customer service.

Components made of strong, aluminum alloy (except for bases). Comply with OSHA requirements for confined space entry and egress. Rated for working loads up to 450 lbs (204.5 kg). Most configurations provide a proof-tested, 5000 lbs (2273 kg) anchor, or at least a 2:1 safety factor when used with approved fall arrest devices. Booms reach up to 48" (122 cm).



ITEM#	Description
FP-FP6660/00	General purpose, davit fixed base
FP-FP6661	Standard, ladder davit base
FP-FP6660/01	Davit concrete sleeve base core, flush mount
FP-FP6660/02	Davit concrete sleeve with flange, flush mount
FP-FP6660/04	Davit base concrete with rods, flush mount
FP-FP6662/00	Wall mount Davit base
FP-FP6663/00	Portable davit base (for temporary anchorage)
FP-FP6669/00	Standard cap to cover davit base cavity
FP-FP6669/01	Flush mount cap to cover davit base cavity
FP-FP6671	Standard, one piece ladder davit, 12" fixed
FP-FP6670/24	Standard davit mast, 12" - 24"
FP-FP6670/48	Davit mast, 26" - 48", for extended boom
FP-FP6680/24	Standard davit boom, 12" - 24"
FP-FP6680/36	Davit boom with extended reach, 25" - 36"
FP-FP6680/48	Davit boom with extended reach, 36" - 48"

### Temporary Horizontal Lifeline Kit

Made with synthetic kernmantle rope, the lightest of North's horizontal lifelines. Provides durable protection that can be moved from site where there are suitable, approved anchor points available. Ideal for construction job sites or bridge and building inspection activities.



ITEM#	Description
FP-FP1001	60' of 5/8" synthetic kernmantle lifeline rope, two carabiners, two anchor slings, one rope tensioner, a 4' lanyard with energy absorber, convenient carrying bag.



### Vertical Lifeline

ITEM#	Description
FP-FP16E/SP(length)	5/8" (16 mm), three-strand Ultralene rope, one termination end, one carabiner end lengths: 25', 30', 50', 100', 200'

### Roofers Kit

Sets up in minutes for an easy-to-use fall protection solution.



#### Includes:

- Two carabiners.
- Carrying bag.
- Thirty-six 4" Ardox spiral nails.
- Manual rope grab with Soft Pak energy absorber for travel restraint.
- Light weight fall arrest harness (sized S-XL).
- 5/8" (16 mm) copolymer lifeline rope with thimble.
- Two disposable roof anchors for temporary use with nails.



ITEM#	Description
FP-FP90/50-(size)	Kit with 50' (15 m) rope
FP-FP90/25-(size)	Kit with 25' (8 m) rope



### Automatic Rope Grab

Constructed from quality, corrosion-resistant materials for long service life. Engineered to meet or exceed applicable ANSI, OSHA and CSA requirements.



ITEM#	Description
FP-FP561	Automatic rope grab with parking feature
FP-FP541	Rope Type: 16E and 16ST Automatic panic lock rope grab
FP-FP542	Rope Type: 16E and 16ST Automatic panic lock rope grab (FP-FP541) with 2' (0.6 m) lanyard energy absorber with snap hook
	Rope Type: 16E & 16ST

### Rope Grabs

All North rope grabs are CSA approved and have a lock mechanism that prevents the user from installing the rope grab on the rope with the wrong orientation. This orientation lock out is a mandatory requirement for any rope grab that is CSA approved.